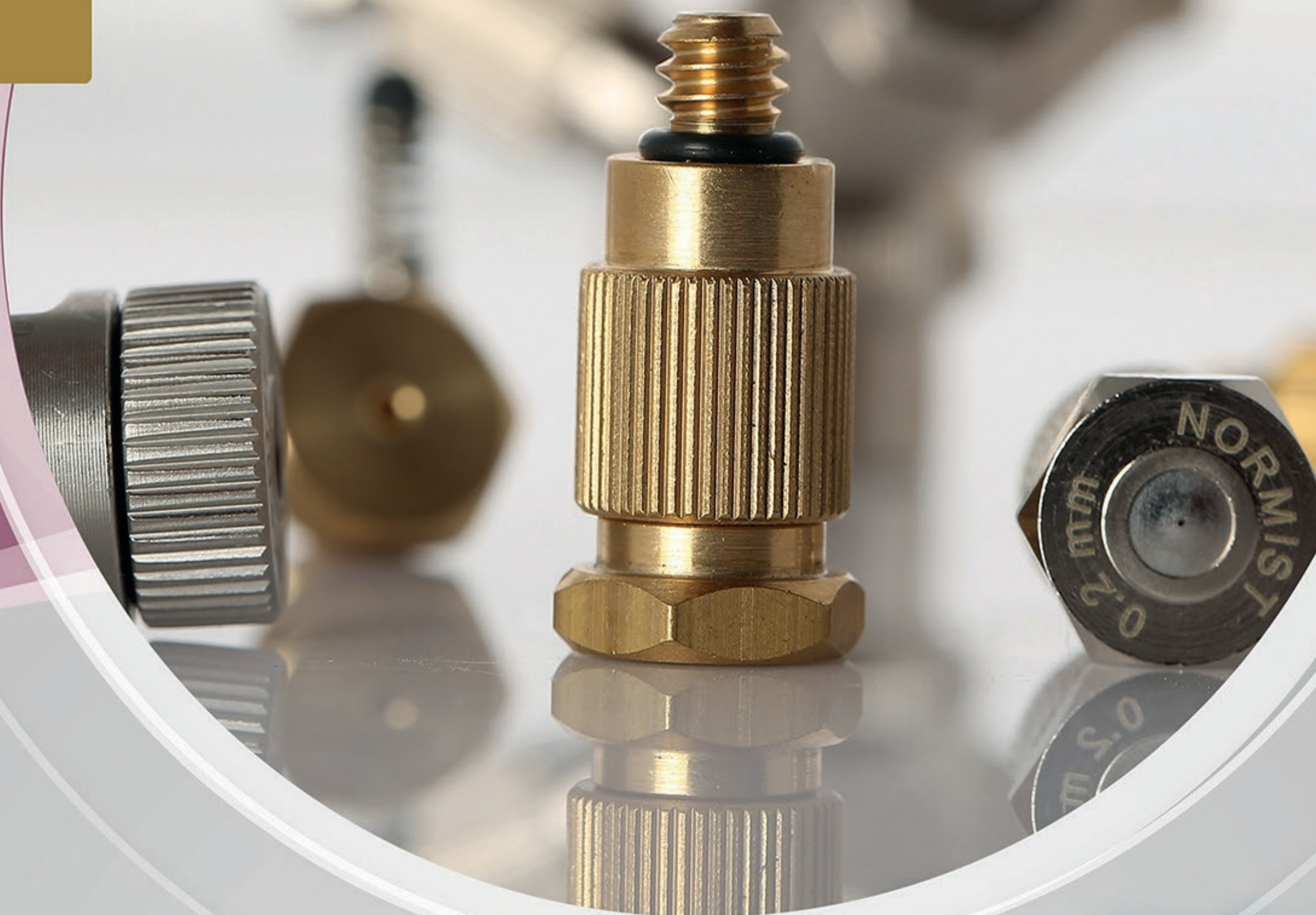


NORMIST®

MISTING NOZZLES

**MISTING NOZZLE
ACCESSORIES**

**NOZZLES SPARE
PARTS**



NOZZLES



MISTING

NOZZLES



High performance hex series (brass & nickel plated)

CODE	ORIFICE DIAMETER	SPRAY ANGLE	AVERAGE DROPLET SIZE	THREAD SIZE
NM10BH-M NM10BH-U1 NM10BH-U2	0.10mm 0.004"	45°	<3m	M5 10-24 12-24
NM15BH-M NM15BH-U1 NM15BH-U2	0.15 mm 0.006"	55°	<5m	M5 10-24 12-24
NM20BH-M NM20BH-U1 NM20BH-U2	0.20 mm 0.008"	70°	<6m	M5 10-24 12-24
NM30BH-M NM30BH-U1 NM30BH-U2	0.30 mm 0.012"	80°	<8m	M5 10-24 12-24
NM40BH-M NM40BH-U1 NM40BH-U2	0.40 mm 0.016"	90°	<11m	M5 10-24 12-24
NM50BH-M NM50BH-U1 NM50BH-U2	0.50 mm 0.020"	95°	<15m	M5 10-24 12-24
NM60BH-M NM60BH-U1 NM60BH-U2	0.60 mm 0.024"	95°	<17m	M5 10-24 12-24
NM70BH-M NM70BH-U1 NM70BH-U2	0.70 mm 0.028"	100°	<20m	M5 10-24 12-24

High performance hex series SS 303

CODE	ORIFICE DIAMETER	SPRAY ANGLE	AVERAGE DROPLET SIZE	THREAD SIZE
NM10SSH-M NM10SSH-U1 NM10SSH-U2	0.10mm 0.004"	45°	<3m	M5 10-24 12-24
NM15SSH-M NM15SSH-U1 NM15SSH-U2	0.15 mm 0.006"	55°	<5m	M5 10-24 12-24
NM20SSH-M NM20SSH-U1 NM20SSH-U2	0.20 mm 0.008"	70°	<6m	M5 10-24 12-24
NM30SSH-M NM30SSH-U1 NM30SSH-U2	0.30 mm 0.012"	80°	<8m	M5 10-24 12-24
NM40SSH-M NM40SSH-U1 NM40SSH-U2	0.40 mm 0.016"	90°	<11m	M5 10-24 12-24
NM50SSH-M NM50SSH-U1 NM50SSH-U2	0.50 mm 0.020"	95°	<15m	M5 10-24 12-24
NM60SSH-M NM60SSH-U1 NM60SSH-U2	0.60 mm 0.024"	95°	<17m	M5 10-24 12-24
NM70SSH-M NM70SSH-U1 NM70SSH-U2	0.70 mm 0.028"	100°	<20m	M5 10-24 12-24



High performance high flow hex series
(brass & nickel plated)

CODE	ORIFICE DIAMETER	SPRAY ANGLE	AVERAGE DROPLET SIZE	THREAD SIZE
NM40BH-HF-M NM40BH-HF-U1 NM40BH-HF-U2	0.40mm 0.016"	90°	<15m	M5 10-24 12-24
NM50BH-HF-M NM50BH-HF-U1 NM50BH-HF-U2	0.50 mm 0.020"	95°	<30m	M5 10-24 12-24
NM60BH-HF-M NM60BH-HF-U1 NM60BH-HF-U2	0.60 mm 0.024"	95°	<38m	M5 10-24 12-24
NM70BH-HF-M NM70BH-HF-U1 NM70BH-HF-U2	0.70 mm 0.028"	100°	<46m	M5 10-24 12-24

High precision mini series for mini fittings (brass)

CODE	ORIFICE DIAMETER	THREAD SIZE
NM15B mini	0.15mm 0.006"	M-5
NM20B mini	0.20 mm 0.008"	M-5
NM30B mini	0.30 mm 0.012"	M-5

High performance knurled all 316L SS series

CODE	ORIFICE DIAMETER	SPRAY ANGLE	AVERAGE DROPLET SIZE	THREAD SIZE
NM10SS316-U1 NM10SS316-U2	0.10mm	45°	<3m	10-24 12-24
NM15SS316-U1 NM15SS316-U2	0.15mm	55°	<5m	10-24 12-24
NM20SS316-U1 NM20SS316-U2	0.20mm	70°	<6m	10-24 12-24
NM30SS316-U1 NM30SS316-U2	0.30mm	85°	<8m	10-24 12-24
NM40SS316-U1 NM40SS316-U2	0.40mm	90°	<11m	10-24 12-24
NM50SS316-U1 NM50SS316-U2	0.50mm	95°	<13m	10-24 12-24
NM60SS316-U1 NM60SS316-U2	0.60mm	95°	<17m	10-24 12-24
NM70SS316-U1 NM70SS316-U2	0.70mm	100°	<20m	10-24 12-24



High precision hex C series cleanable with anti-drip adaptor (brass & nickel plated)

High precision hex C series cleanable nozzle with anti-drip adaptor (SS 303)



CODE	ORIFICE DIAMETER	THREAD SIZE
NM10BHC-AD-M NM10BHC-AD-U1 NM10BHC-AD-U2	0.10mm 0.004"	M5 10-24 12-24
NM15BHC-AD-M NM15BHC-AD-U1 NM15BHC-AD-U2	0.15 mm 0.006"	M5 10-24 12-24
NM20BHC-AD-M NM20BHC-AD-U1 NM20BHC-AD-U2	0.20 mm 0.008"	M5 10-24 12-24
NM30BHC-AD-M NM30BHC-AD-U1 NM30BHC-AD-U2	0.30 mm 0.012"	M5 10-24 12-24
NM40BHC-AD-M NM40BHC-AD-U1 NM40BHC-AD-U2	0.40 mm 0.016"	M5 10-24 12-24
NM50BHC-AD-M NM50BHC-AD-U1 NM50BHC-AD-U2	0.50 mm 0.020"	M5 10-24 12-24
NM60BHC-AD-M NM60BHC-AD-U1 NM60BHC-AD-U2	0.60 mm 0.024"	M5 10-24 12-24
NM70BHC-AD-M NM70BHC-AD-U1 NM70BHC-AD-U2	0.70 mm 0.028"	M5 10-24 12-24

CODE	ORIFICE DIAMETER	THREAD SIZE
NM10SSHC-AD-M NM10SSHC-AD-U1 NM10SSHC-AD-U2	0.10mm 0.004"	M5 10-24 12-24
NM15SSHC-AD-M NM15SSHC-AD-U1 NM15SSHC-AD-U2	0.15 mm 0.006"	M5 10-24 12-24
NM20SSHC-AD-M NM20SSHC-AD-U1 NM20SSHC-AD-U2	0.20 mm 0.008"	M5 10-24 12-24
NM30SSHC-AD-M NM30SSHC-AD-U1 NM30SSHC-AD-U2	0.30 mm 0.012"	M5 10-24 12-24
NM40SSHC-AD-M NM40SSHC-AD-U1 NM40SSHC-AD-U2	0.40 mm 0.016"	M5 10-24 12-24
NM50SSHC-AD-M NM50SSHC-AD-U1 NM50SSHC-AD-U2	0.50 mm 0.020"	M5 10-24 12-24
NM60SSHC-AD-M NM60SSHC-AD-U1 NM60SSHC-AD-U2	0.60 mm 0.024"	M5 10-24 12-24
NM70SSHC-AD-M NM70SSHC-AD-U1 NM70SSHC-AD-U2	0.70 mm 0.028"	M5 10-24 12-24

High precision knurled all 316L SS cleanable nozzle with anti-drip adaptor and viton O ring

High Performance HEX C Series SS 303 cleanable Nozzles with anti drip adaptor. Orifice part is ceramic



CODE	ORIFICE DIAMETER	THREAD SIZE
NM10SS316C-AD NM10SS316C-AD NM10SS316C-AD	0.10mm 0.004"	M5 10-24 12-24
NM15SS316C-AD NM15SS316C-AD NM15SS316C-AD	0.15 mm 0.006"	M5 10-24 12-24
NM20SS316C-AD NM20SS316C-AD NM20SS316C-AD	0.20 mm 0.008"	M5 10-24 12-24
NM30SS316C-AD NM30SS316C-AD NM30SS316C-AD	0.30 mm 0.012"	M5 10-24 12-24
NM40SS316C-AD NM40SS316C-AD NM40SS316C-AD	0.40 mm 0.016"	M5 10-24 12-24
NM50SS316C-AD NM50SS316C-AD NM50SS316C-AD	0.50 mm 0.020"	M5 10-24 12-24
NM60SS316C-AD NM60SS316C-AD NM60SS316C-AD	0.60 mm 0.024"	M5 10-24 12-24
NM70SS316C-AD NM70SS316C-AD NM70SS316C-AD	0.70 mm 0.028"	M5 10-24 12-24

CODE	ORIFICE DIAMETER	THREAD SIZE
NMCERAMIC-10-AD NMCERAMIC-10-AD NMCERAMIC-10-AD	0.10mm 0.004"	M5 10-24 12-24
NMCERAMIC-15-AD NMCERAMIC-15-AD NMCERAMIC-15-AD	0.15 mm 0.006"	M5 10-24 12-24
NMCERAMIC-20-AD NMCERAMIC-20-AD NMCERAMIC-20-AD	0.20 mm 0.008"	M5 10-24 12-24
NMCERAMIC-30-AD NMCERAMIC-30-AD NMCERAMIC-30-AD	0.30 mm 0.012"	M5 10-24 12-24
NMCERAMIC-40-AD NMCERAMIC-40-AD NMCERAMIC-40-AD	0.40 mm 0.016"	M5 10-24 12-24
NMCERAMIC-50-AD NMCERAMIC-50-AD NMCERAMIC-50-AD	0.50 mm 0.020"	M5 10-24 12-24

High precision 1/8" NPT CF nozzle series cleanable with anti drip adapter and filter (SS 303)

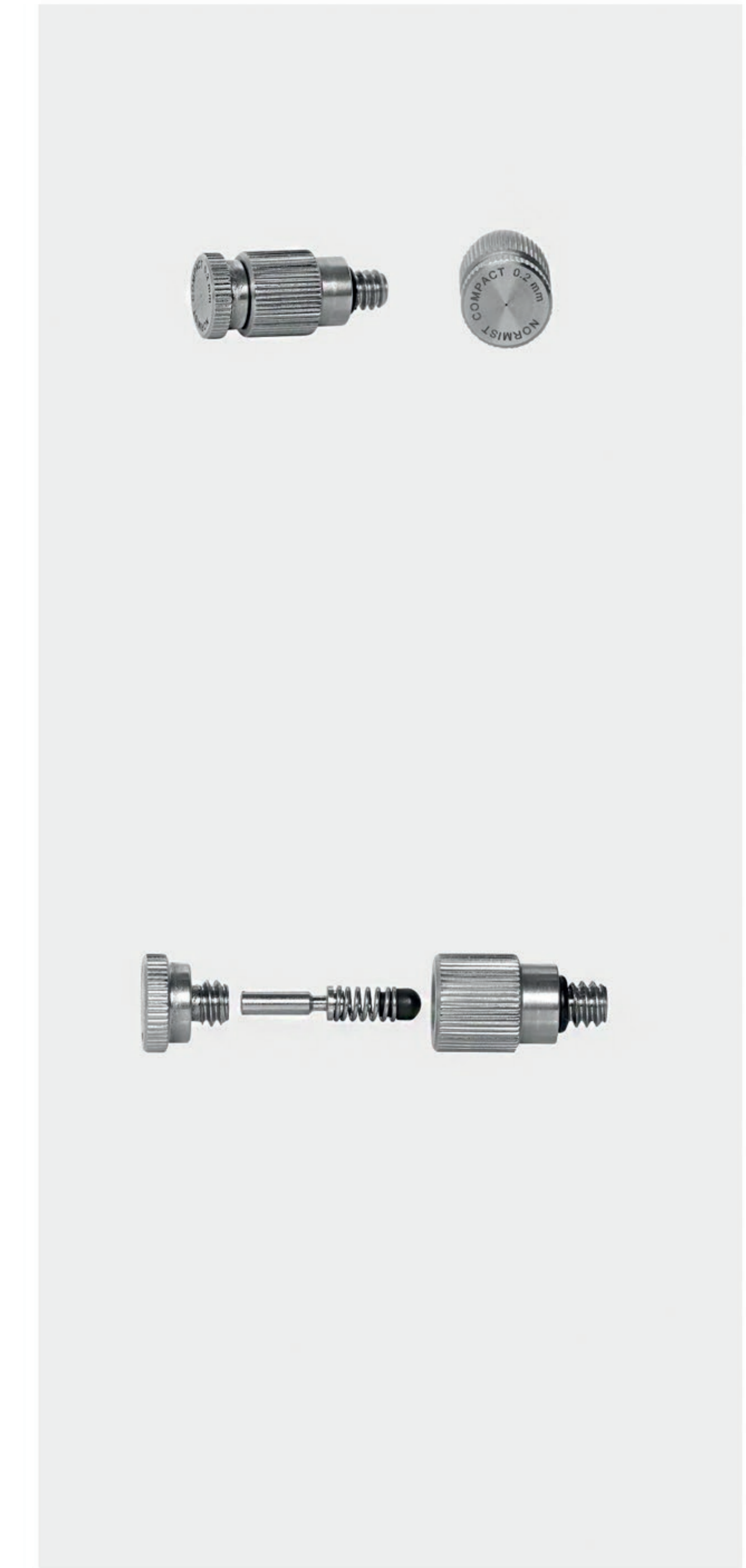
CODE	ORIFICE DIAMETER	THREAD SIZE
NM10SS 1-8F	0.10mm 0.004"	1/8" NPT
NM15SS 1-8F	0.15 mm 0.006"	1/8" NPT
NM20SS 1-8F	0.20 mm 0.008"	1/8" NPT
NM30SS 1-8F	0.30 mm 0.012"	1/8" NPT
NM40SS 1-8F	0.40 mm 0.016"	1/8" NPT
NM50SS 1-8F	0.50 mm 0.020"	1/8" NPT
NM60SS 1-8F	0.60 mm 0.024"	1/8" NPT
NM70SS 1-8F	0.70 mm 0.028"	1/8" NPT

High precision 9/16" NPT CF nozzle series cleanable with anti-drip adaptor and filter (SS 303)

CODE	ORIFICE DIAMETER	THREAD SIZE
NM10SS 9-16F	0.10mm 0.004"	9/16"
NM15SS 9-16F	0.15 mm 0.006"	9/16"
NM20SS 9-16F	0.20 mm 0.008"	9/16"
NM30SS 9-16F	0.30 mm 0.012"	9/16"
NM40SS 9-16F	0.40 mm 0.016"	9/16"
NM50SS 9-16F	0.50 mm 0.020"	9/16"

Compact series SS 303 cleanable nozzle with anti-drip adaptor

CODE	ORIFICE DIAMETER	THREAD SIZE
NMC20SS303C-AD NMC20SS303C-AD NMC20SS303C-AD	0.20 mm 0.008"	M5 10-24 12-24
NMC30SS303C-AD NMC30SS303C-AD NMC30SS303C-AD	0.30 mm 0.012"	M5 10-24 12-24
NMC40SS303C-AD NMC40SS303C-AD NMC40SS303C-AD	0.40 mm 0.016"	M5 10-24 12-24
NMC50SS303C-AD NMC50SS303C-AD NMC50SS303C-AD	0.50 mm 0.020"	M5 10-24 12-24





Cluster head nozzle adaptor with filter. Nickel plated
(Without nozzle)

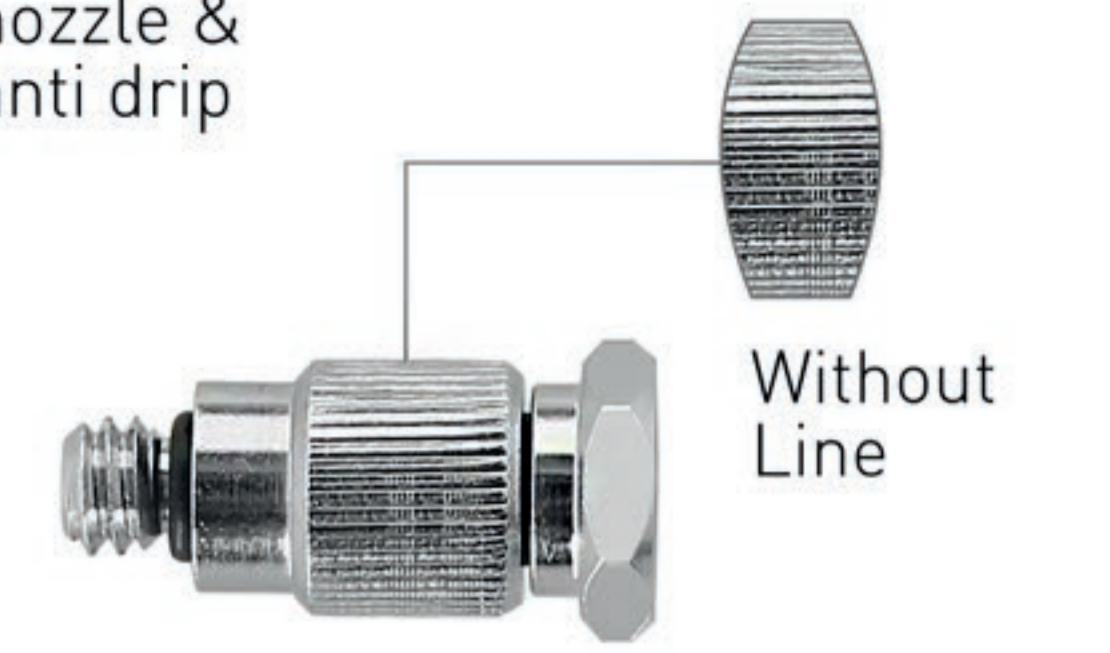
CODE	DESCRIPTION	THREAD SIZE
0301195-3	Cluster for 3 nozzles	3xM5 3x10-24 3x12-24
0301195-4	Cluster for 4 nozzles	4xM5 4x10-24 4x12-24
0301195-5	Cluster for 5 nozzles	5xM5 5x10-24 5x12-24



Anti drip adapter threads

CODE	DESCRIPTION	THREAD SIZE
0301041	Brass anti drip adaptor	M5 10-24 12-24
0301062	303 SS anti drip adaptor	M5 10-24 12-24
0301062-316L	316L SS anti drip adaptor	M5 10-24 12-24

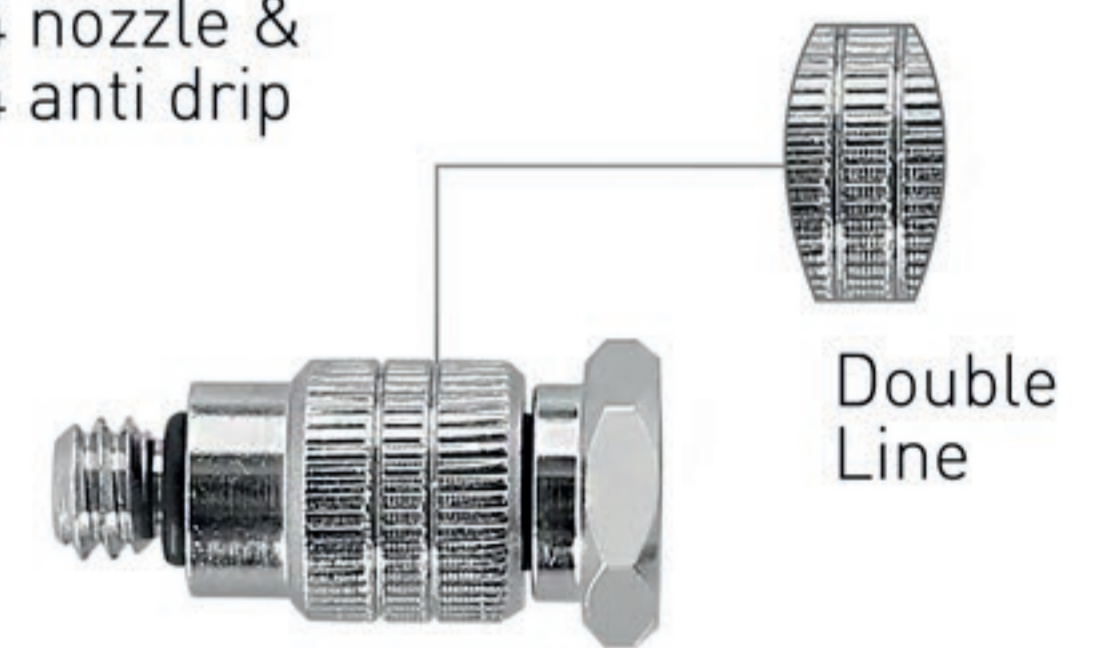
UNC 10-24 nozzle & UNC 10-24 anti drip adapter



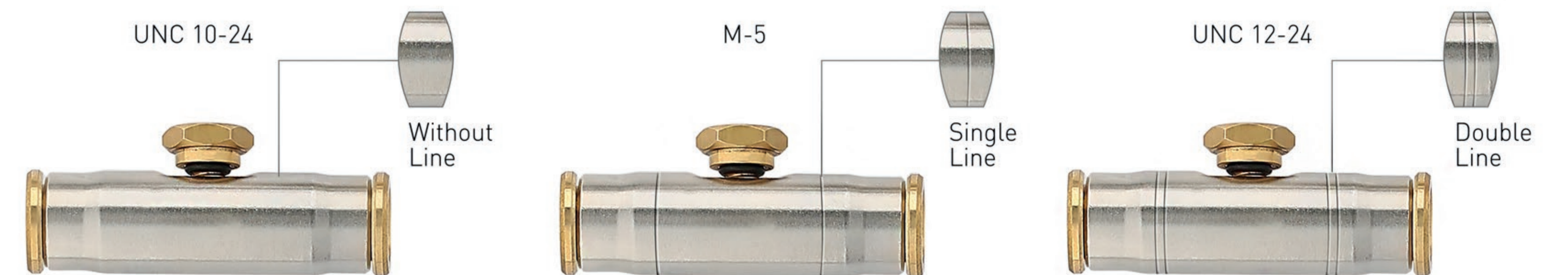
M-5 nozzle & M-5 anti drip adapter



UNC 12-24 nozzle & UNC 12-24 anti drip adapter

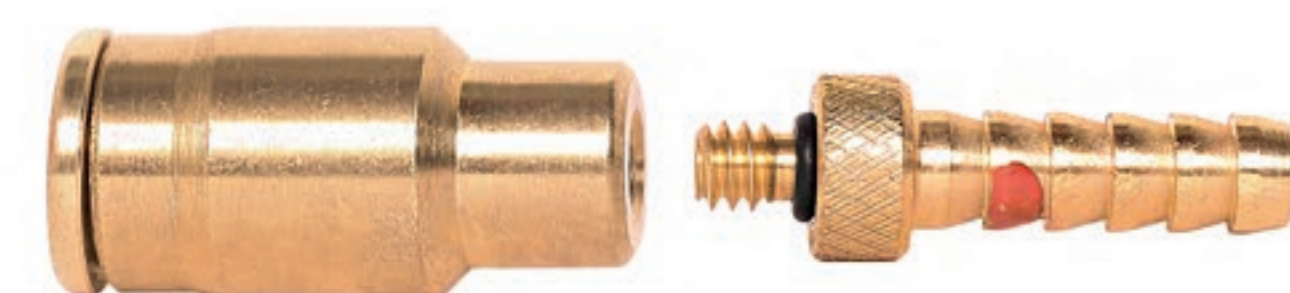
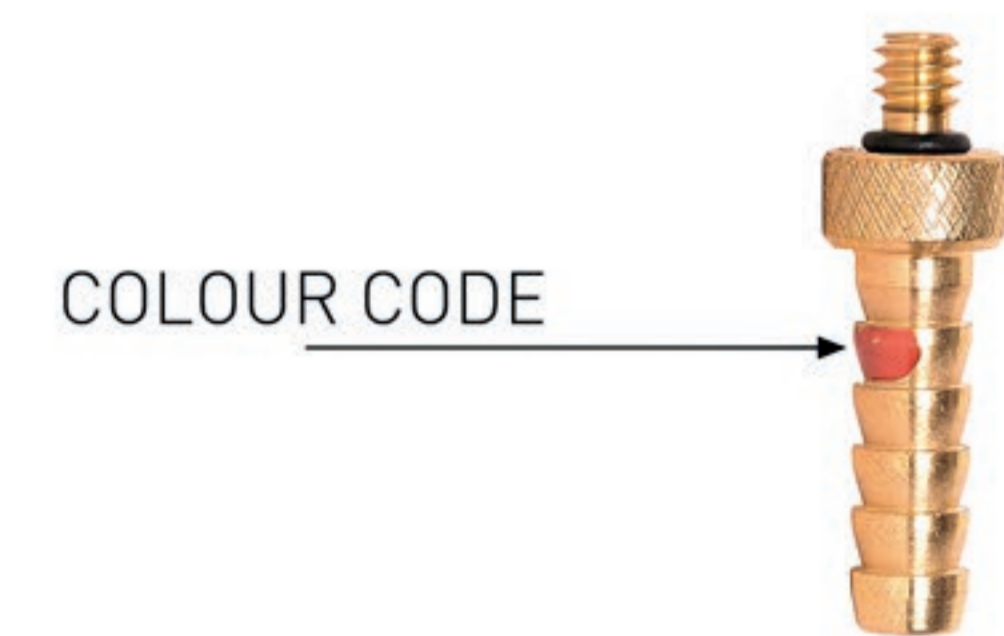


How to distinguish threads



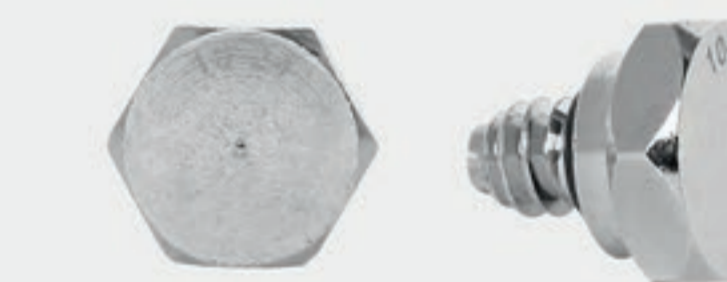
Discharge nozzles (brass)

CODE	COLOUR	ORIFICE SIZE	PRESSURE					
			30 bar 435 psi	40 bar 580 psi	50 bar 725 psi	60 bar 870 psi	70 bar 1015 psi	80 bar 1160 psi
0301032	Red/White	0,50mm	0,7 L	0,8 L	0,9 L	1,0 L	1,1 L	1,2 L
0301031	Black/White	0,70mm	1,6 L	1,8 L	2,0 L	2,2 L	2,4 L	2,6 L
0301016	White	1,00mm	2,5 L	2,8 L	3,2 L	3,5 L	3,7 L	4,0 L
0301017	Black	1,10mm	3,7 L	4,3 L	4,8 L	5,3 L	5,7 L	6,1 L
0301018	Red	1,20mm	5,2 L	5,9 L	6,6 L	7,3 L	7,8 L	8,4 L
0301019	Yellow	1,30mm	5,8 L	6,8 L	7,5 L	8,3 L	9,0 L	9,5 L
0301020	Green	1,40mm	6,8 L	7,8 L	8,7 L	9,6 L	10,3 L	11,1 L
0301021	Pink	1,50mm	8,0 L	9,3 L	10,4 L	11,3 L	12,3 L	13,2 L
0301022	Orange	1,60mm	8,6 L	10,0 L	11,2 L	12,2 L	13,2 L	14,1 L
0301023	Blue	1,70mm	9,8 L	11,3 L	12,7 L	14,0 L	15,1 L	16,1 L



Nozzle Plug

CODE	DESCRIPTION	THREAD SIZE
301084	Nozzle plug brass	UNC 10-24
0301084-1	Nozzle plug brass	UNC 12-24
0301084-2	Nozzle plug brass	M5
0101020	303 SS nozzle plug	UNC 10-24
0101020-1	303 SS nozzle plug	UNC 12-24
0101020-2	303 SS nozzle plug	M5



Drain Valve

CODE	DESCRIPTION	THREAD SIZE
0101004	Auto drain valve	UNC 10-24
0101004-1	Auto drain valve	UNC 12-24
0101019	303 SS auto drain valve	UNC 10-24
0101019-1	303 SS auto drain valve	UNC 12-24





1/8" Orientable nozzle head with filter

CODE	THREAD SIZE
NM10SS-8F-SW	1/8"
NM15SS-8F-SW	1/8"
NM20SS-8F-SW	1/8"
NM30SS-8F-SW	1/8"
NM40SS-8F-SW	1/8"
NM50SS-8F-SW	1/8"
NM60SS-8F-SW	1/8"
NM70SS-8F-SW	1/8"



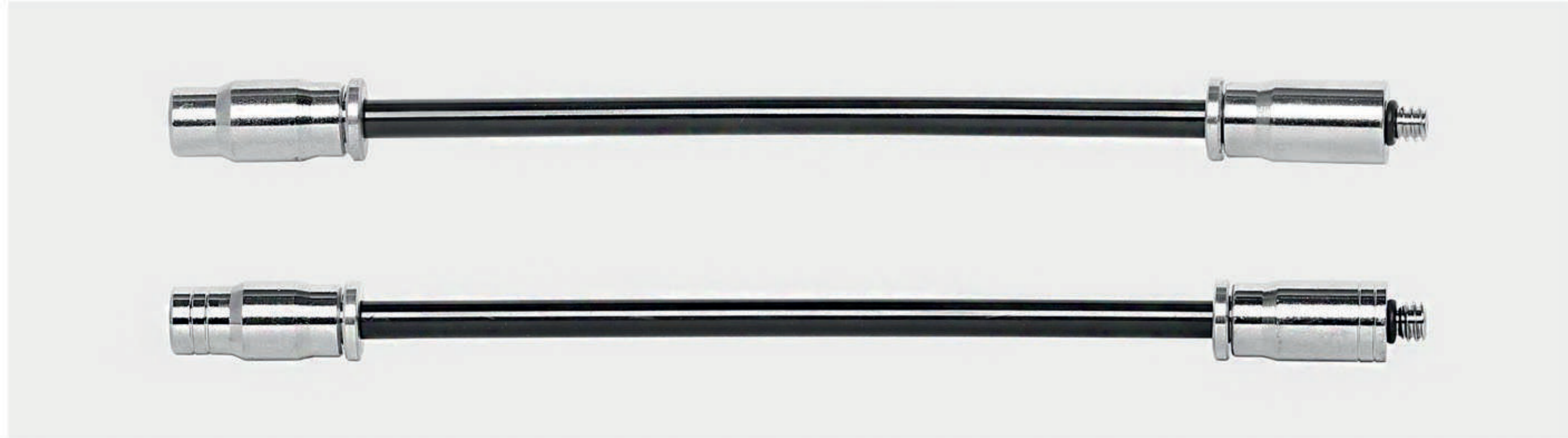
Swivel adaptor for nozzle, nickel plated brass



CODE	THREAD SIZE
0301188-M5	M-5
0301188-U1	UNC10-24
0301188-U2	UNC12-24



Flexible nozzle extention



CODE	DESCRIPTION	THREAD SIZE
0301035	Flexible nozzle extention	UNC 10-24
0301035-U2	Flexible nozzle extention	UNC 12-24

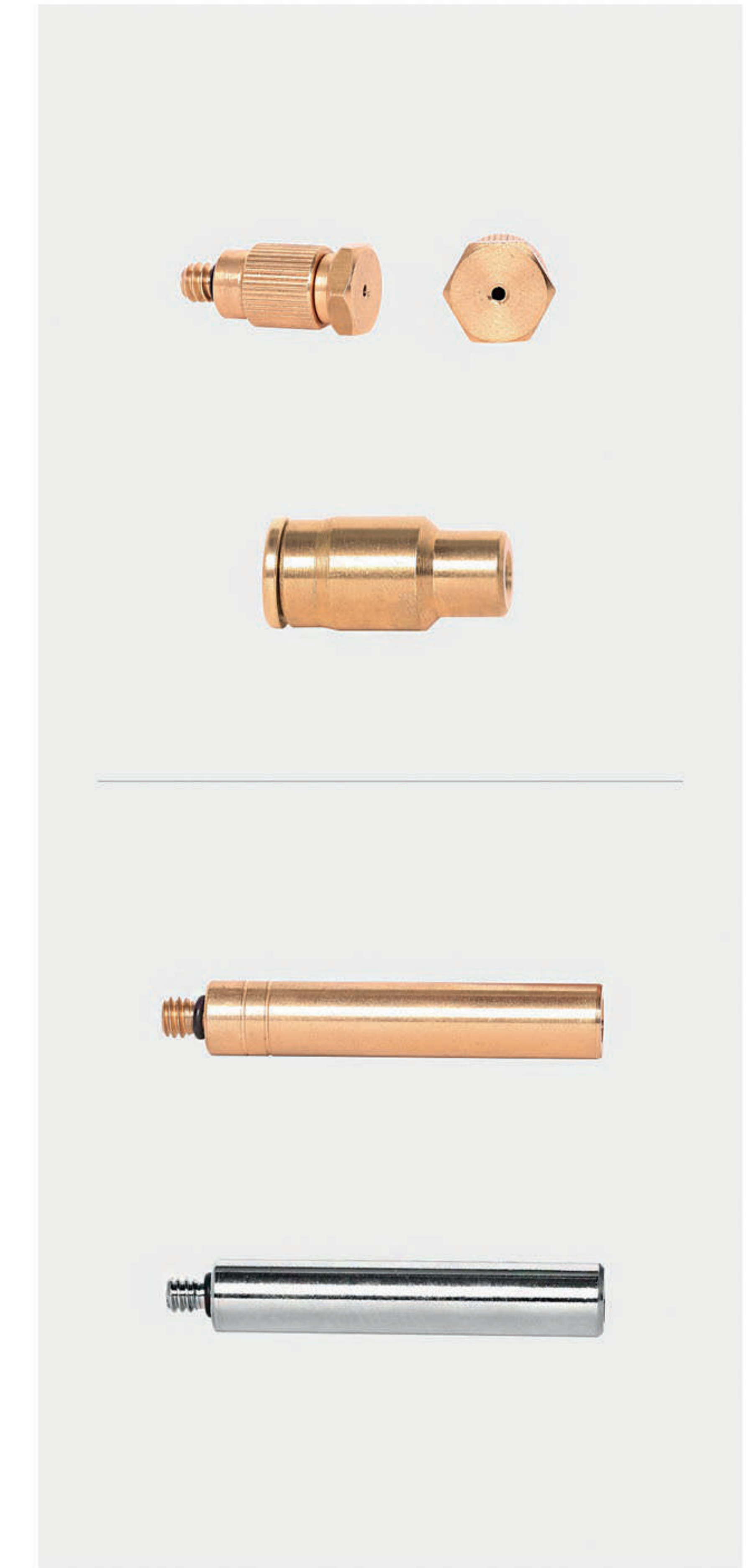


Brass adaptor for 1/8" nozzle to nozzle fitting

CODE	THREAD SIZE
0201054-U1	UNC10-24
0201054-M5	Metric 5

Drain Set

CODE	DESCRIPTION
0301037	Drain Set 0101004 + 0301015



50 mm Nozzle extention

NOZZLE CODE	DESCRIPTION	THREAD SIZE
0301034	Nozzle 50 mm extention	UNC 10-24
0301034-U2	Nozzle 50 mm extention	UNC 12-24



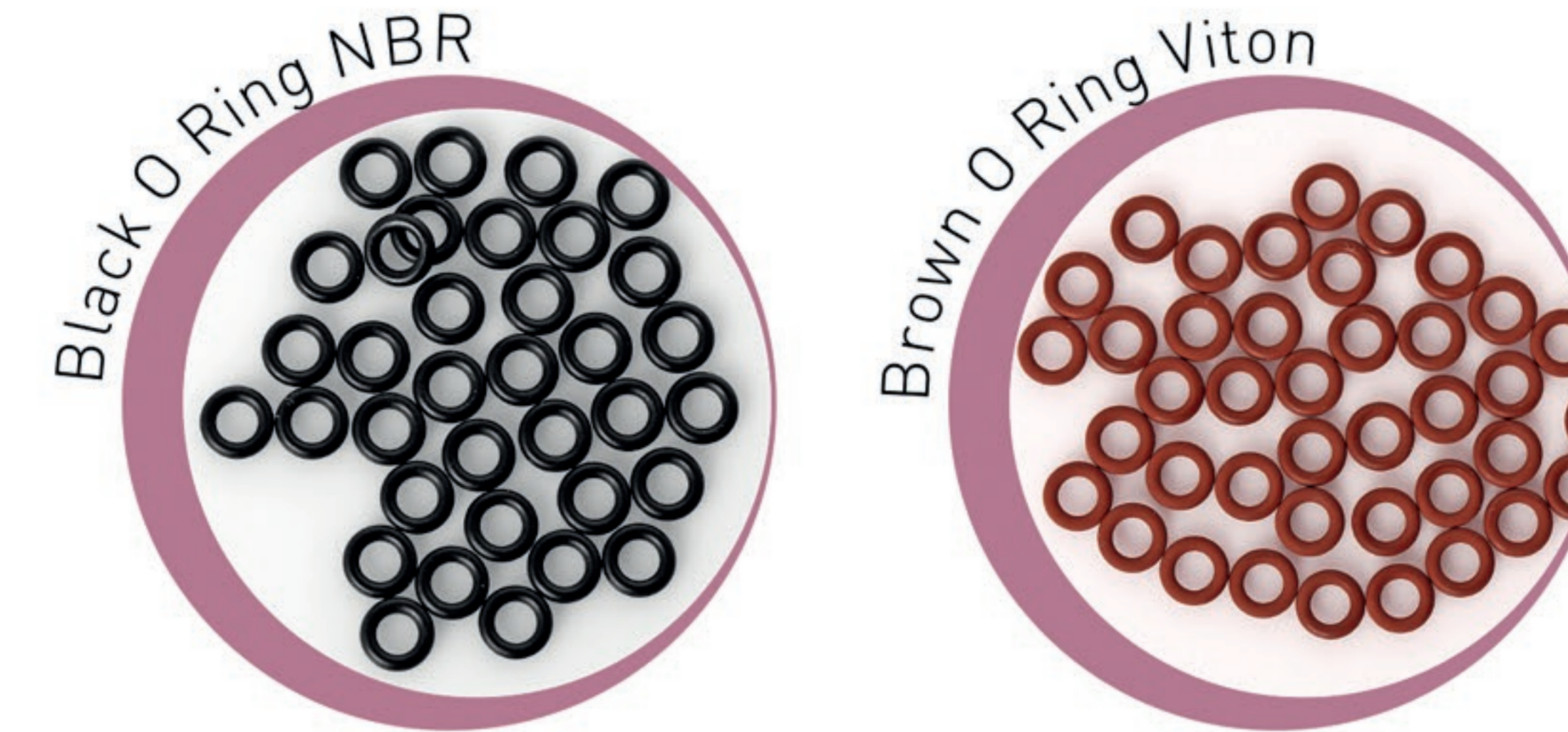
Spigots

CODE	THREAD SIZE
0301161	M5
0301162	UNC10-24
0301163	UNC12-24

Spigot for 1/8" nozzle. Suitable for 10&12 mm SS tubing

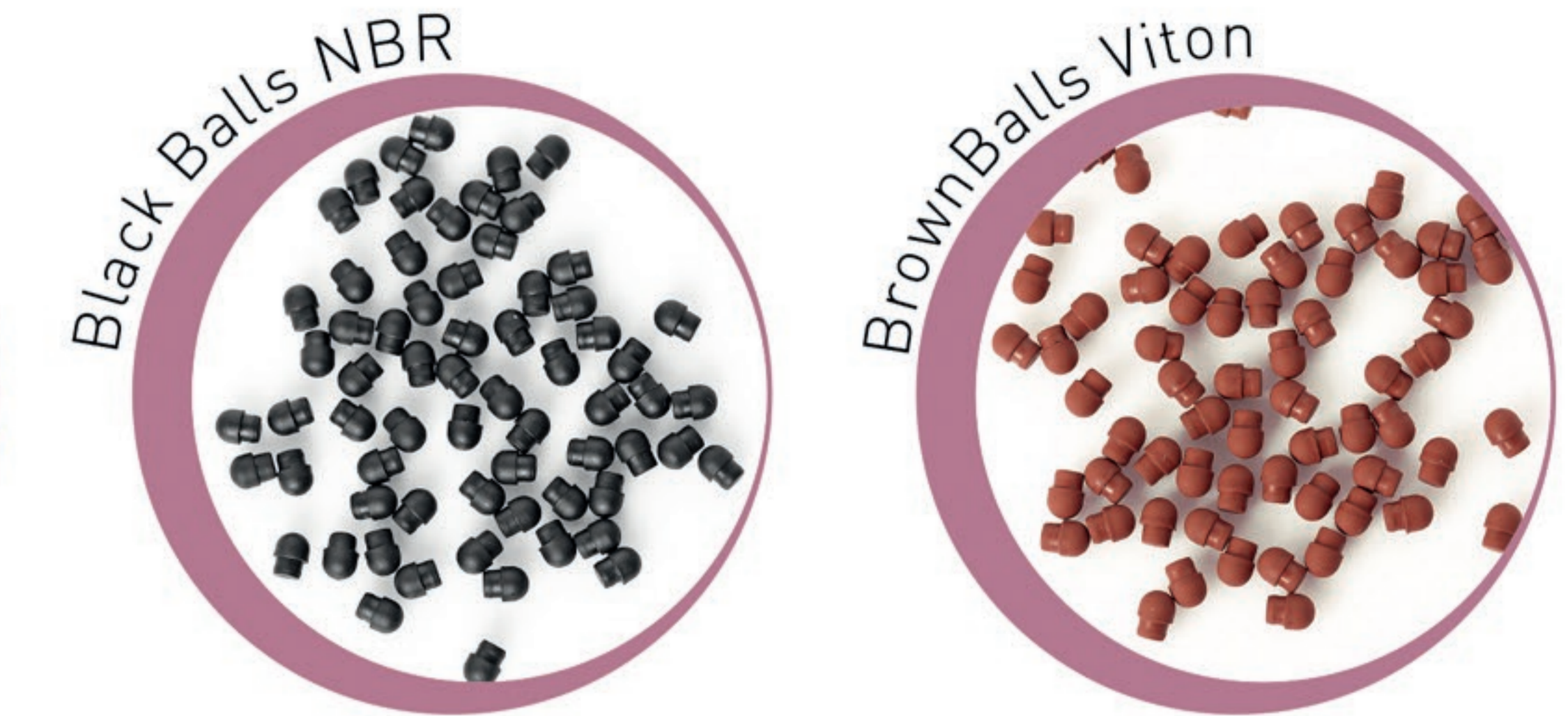
CODE	THREAD SIZE
0301160	UNC10-24

Nozzle O Ring



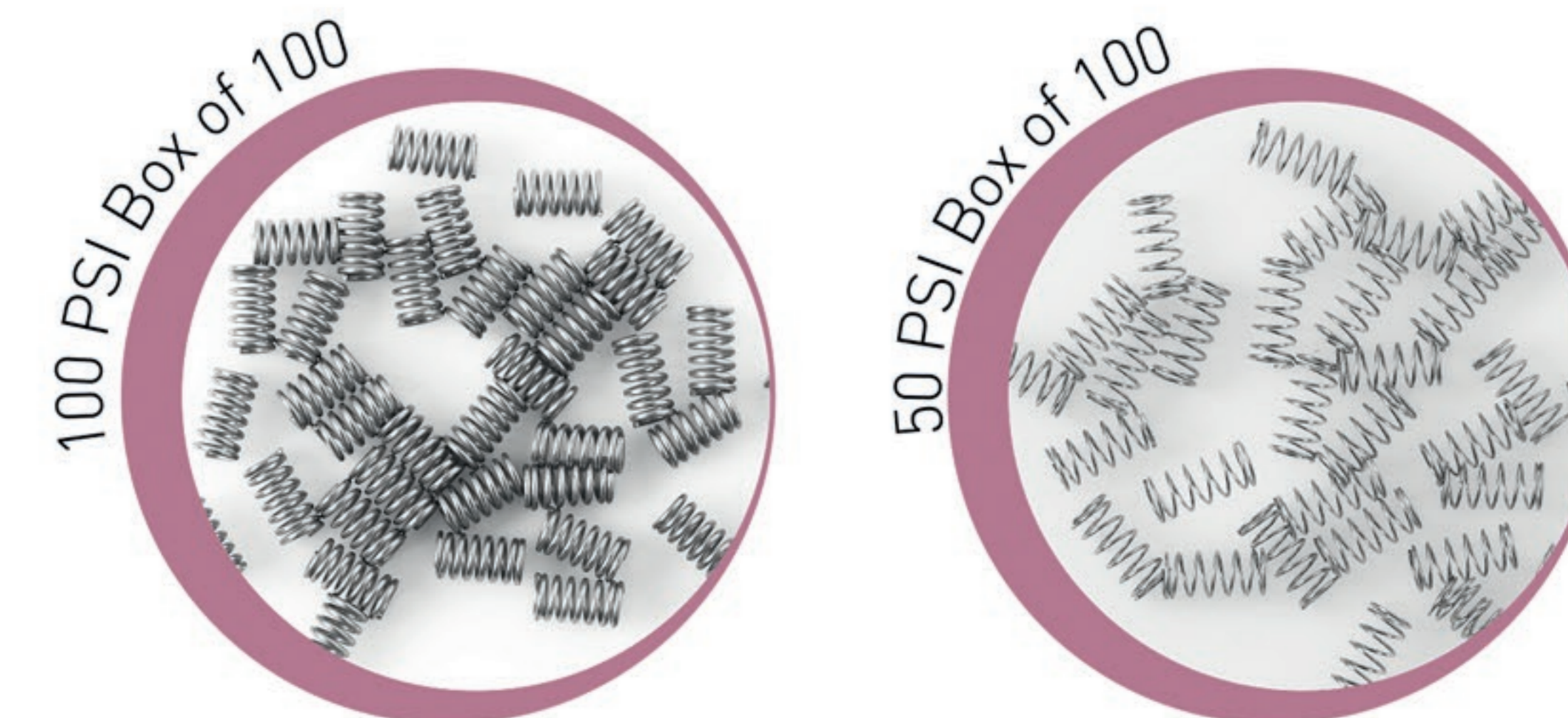
CODE	DESCRIPTION
0201014	Black O ring for nozzle Box of 100
0201014V	Brown O ring for nozzle VITON Box of 100

Adaptor Balls



CODE	DESCRIPTION
0101007	Black ball for anti drip adaptor Box of 100
0101007V	Brown ball for anti drip adaptor VITON Box of 100

Adaptor Springs



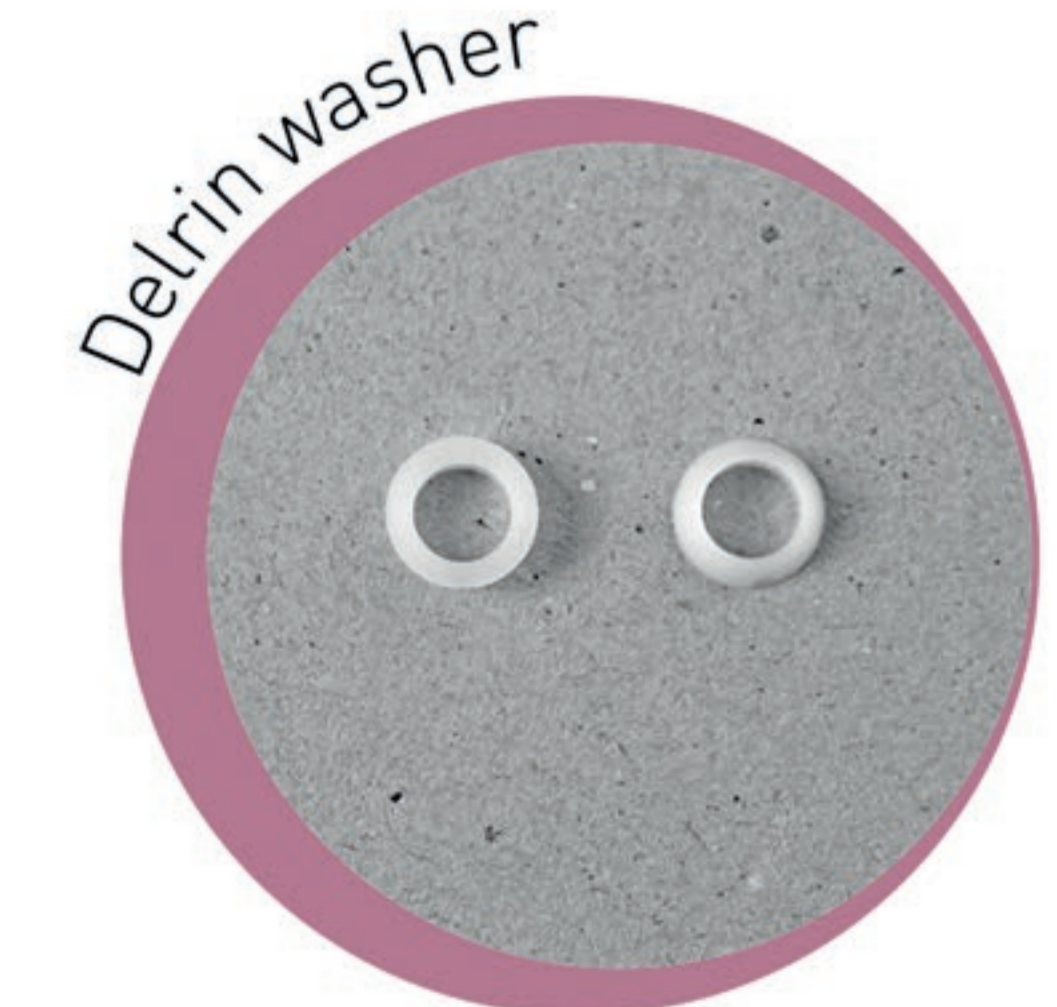
CODE	DESCRIPTION
0206001	Spring for anti drip adaptor 100 PSI Box of 100
0206001L	Spring for anti drip adaptor 50 PSI Box of 100

Nozzle Filters



CODE	DESCRIPTION
0101022	Spare filter for 1/8" nozzles. Box of 100
0301166	Delrin washer for M5 Hex nozzles

Washer For Nozzles



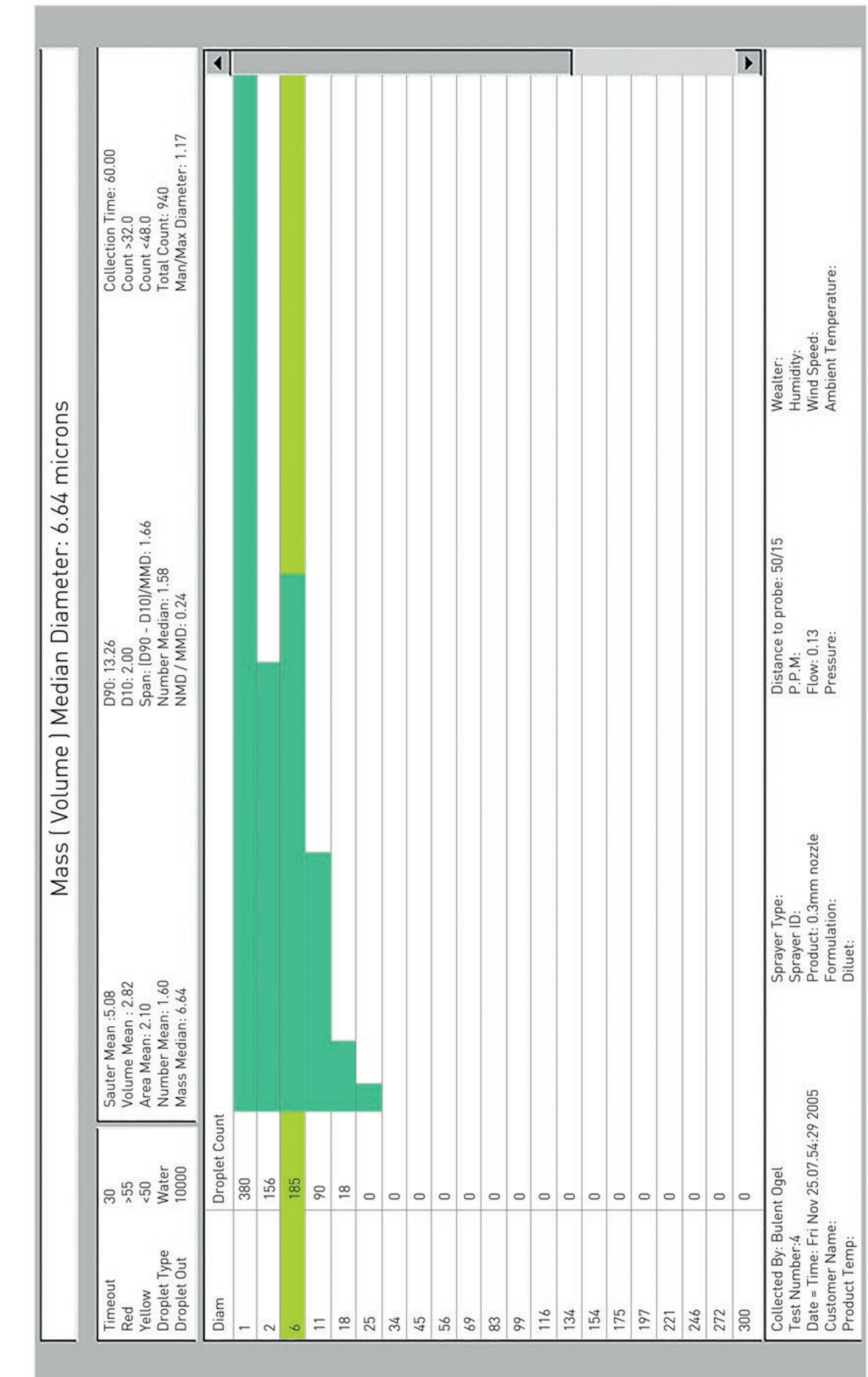
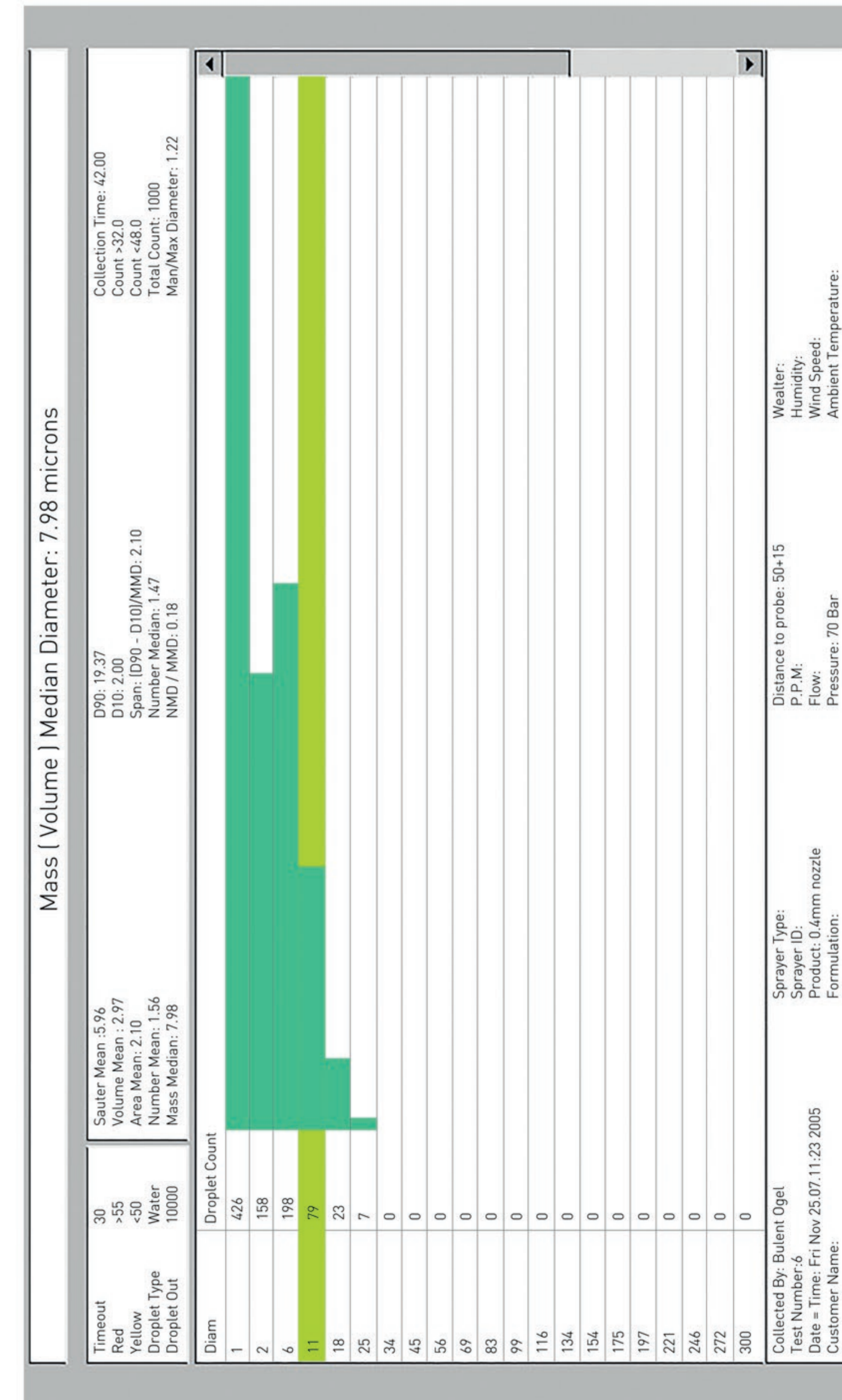
Normist high performance misting nozzles hex series

CODE	ORIFICE Ø	SPRAY ANGLE*	MEDIAN DROPLET SIZE*	THREAD SIZE	O RING COLOR	FLOW LPM & GPM												
						1 GPM = 3.785 LPM												
						30 BAR 435 PSI	40 BAR 580 PSI	50 BAR 725 PSI	60 BAR 870 PSI	70 BAR 1000 PSI	80 BAR 1160 PSI	90 BAR 1305 PSI	100 BAR 1450 PSI	110 BAR 1595 PSI	120 BAR 1740 PSI	130 BAR 1885 PSI		
NM10BH-M NM10BH-U1 NM10BH-U2	0.10mm 0.004"	45°	3µ	M5 UNC 10-24 UNC 10-24	Black " "		.017	.022	.027	.030	.039	.042	.044	.045	.047	.049		
NM15BH-M NM15BH-U1 NM15BH-U2	0.15mm 0.006"	55°	5µ	M5 UNC 10-24 UNC 10-24	Black " "	.024	.038	.043	.047	.050	.058	.064	.068	.070	.072	.075		
NM20BH-M NM20BH-U1 NM20BH-U2	0.20mm 0.008"	70°	6µ	M5 UNC 10-24 UNC 10-24	Black " "	.041	.057	.063	.071	.075	.081	.085	.091	.093	.097	.102		
NM30BH-M NM30BH-U1 NM30BH-U2	0.30mm 0.012"	85°	8µ	M5 UNC 10-24 UNC 10-24	Black " "	.070	.082	.091	.102	.105	.116	.122	.132	.140	.146	.150		
NM40BH-M NM40BH-U1 NM40BH-U2	0.40mm 0.016"	90°	11µ	M5 UNC 10-24 UNC 10-24	Black " "	.094	.116	.128	.142	.150	.159	.169	.185	.190	.197	.209		
NM50BH-M NM50BH-U1 NM50BH-U2	0.50mm 0.020"	95°	13µ	M5 UNC 10-24 UNC 10-24	Black " "	.117	.136	.160	.180	.190	.195	.209	.228	.235	.240	.250		
NM60BH-M NM60BH-U1 NM60BH-U2	0.60mm 0.024"	95°	17µ	M5 UNC 10-24 UNC 10-24	Black " "	.135	.162	.180	.196	.210	.228	.241	.255	.275	.285	.300		
NM70BH-M NM70BH-U1 NM70BH-U2	0.70mm 0.028"	100°	20µ	M5 UNC 10-24 UNC 10-24	Black " "	.161	.184	.209	.228	.240	.256	.274	.294	.305	.315	.330		

Orifice material is stainless steel 316 quality
Orifice size is laser marked on the nozzle body

*Measured at 70 Bar / 1000 PSI

Droplet test reports



Flow rate diagrams at 70 Bar /1000 PSI



0.10mm
0.030 Lt./min



0.15mm
0.050 Lt./min



0.20mm
0.075 Lt./min



0.30mm
0.105 Lt./min.



0.40mm
0.150 Lt./min



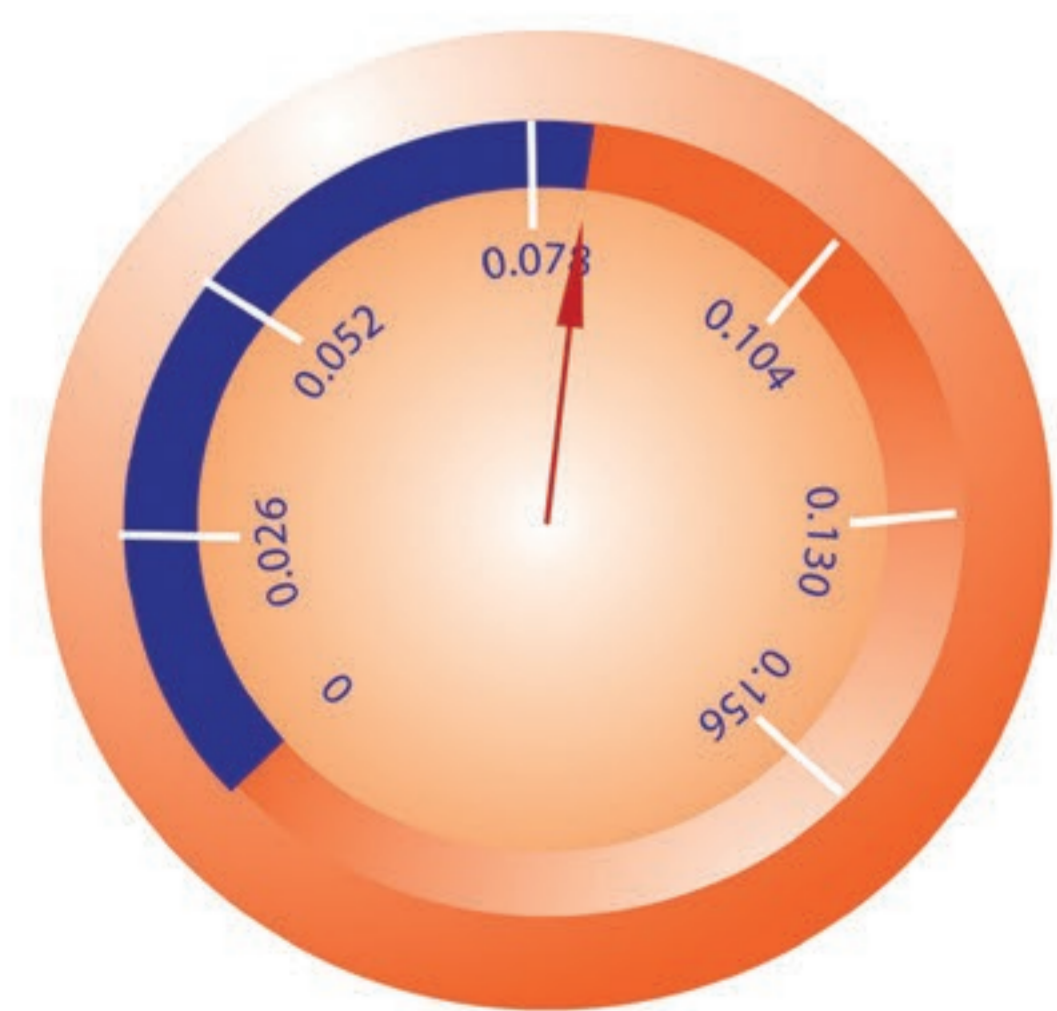
0.50mm
0.190 Lt./min



0.60mm
0.210 Lt./min.



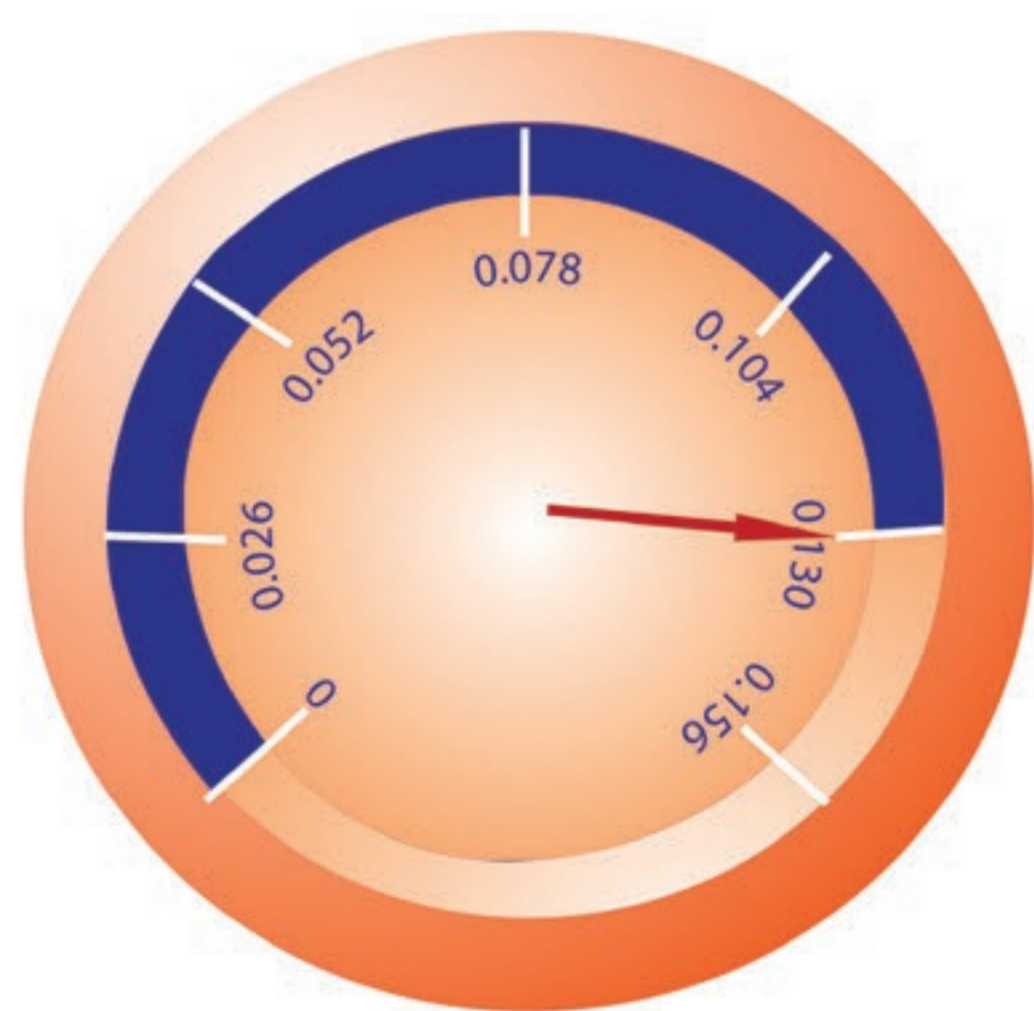
0.70mm
0.240 Lt./min



0.40mm HF
0.315 Lt./min.



0.50mm HF
0.440 Lt./min



0.60mm HF
0.500 Lt./min.



0.70mm HF
0.590 Lt./min

NOZZLES



www.normist-tr.com